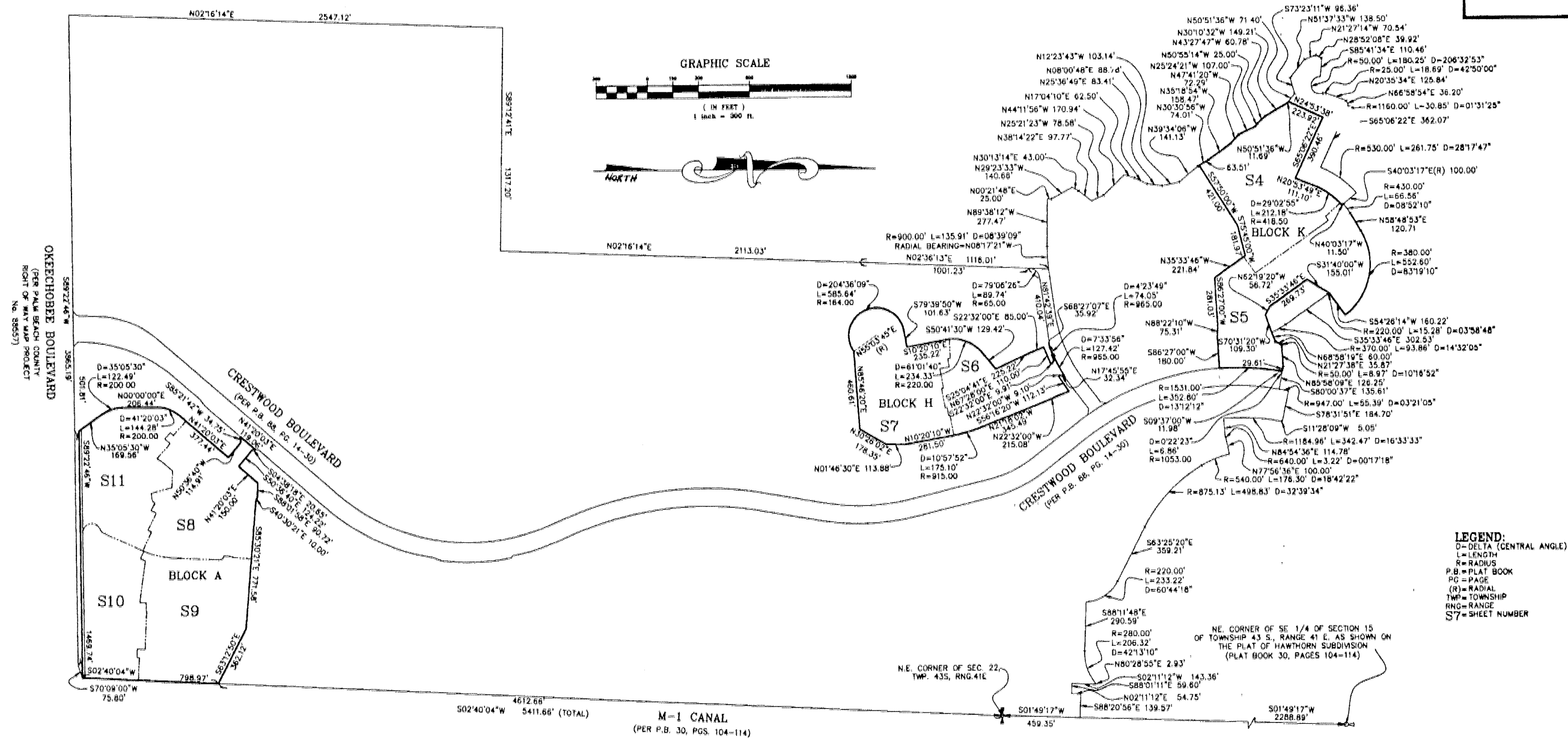


MADISON GREEN-PLAT No. 1, PARCEL "A", PARCEL "H" AND PARCEL "K", REPLAT
 BEING A REPLAT OF ALL OF PARCEL "A", PARCEL "H" AND PARCEL "K" AS SHOWN ON MADISON GREEN --
 PLAT No. 1, AS RECORDED IN PLAT BOOK 88, PAGES 14 THROUGH 30 OF THE
 PUBLIC RECORDS OF PALM BEACH COUNTY FLORIDA, IN SECTIONS 15 AND 22, TOWNSHIP 43 SOUTH,
 RANGE 41 EAST VILLAGE OF ROYAL PALM BEACH, PALM BEACH COUNTY, FLORIDA
 FEBRUARY 2001
 SHEET 3 OF 11



LEGEND:
 D=DELTA (CENTRAL ANGLE)
 L=LENGTH
 R=RADIUS
 P.B.=PLAT BOOK
 PG.=PAGE
 (R)=RADIAL
 TWP.=TOWNSHIP
 RNG.=RANGE
 S7=SHEET NUMBER

MADISON GREEN-PLAT No.1, PARCEL "A", PARCEL "H" AND PARCEL "K", REPLAT	
 NICK MILLER, INC. Surveying & Mapping Consultants SUITE 105 2560 RCA BLVD. PALM BEACH GARDENS, FLORIDA 33410 TEL 561 627-5200 FAX 561 627-0983 D.B.P.R. LICENSED BUSINESS No. 4318	SHEET NO. 3
	SCALE: 1"=300'
	DATE: FEB 2000
	JOB NO. 99043AK FILE: 99043AKS-3